



HOSPICE PETERBOROUGH  
CARE CENTRE

## Hospice Peterborough Care Centre **EVERY MOMENT MATTERS CAMPAIGN UPDATE**



### **A New Home for Hospice**

**Our goal is to build a state-of-the-art, 10 bed care facility and programming centre that offers a homelike, safe refuge throughout the journey of illness, death and grief.**

The Hospice Peterborough Care Centre will fill a gap in care by enhancing palliative services in our community. We will create a truly rich community asset for people at the end of life and for those living with or affected by serious illness and grief. We will ensure that integrated hospice care becomes a sustainable reality available to all individuals and families in the Peterborough area.

### **Why do we need a Hospice Care Centre?**

- 1** Our community needs another choice for end-of-life care. Community-based hospice palliative care is qualitatively different than care in a hospital. The setting of care in the hospice will be homelike, peaceful, and comfortable. We will provide compassionate, family-centred care that focuses on pain and symptom management and emotional and spiritual support, delivered by highly qualified health care professionals and volunteers.
- 2** There are 26 communities across our province with hospice care beds. By population, our region has fallen far behind other Ontario municipalities in not having hospice care beds. The demographics of our city, one of the oldest in the country, require a new option for end-of-life care – a hospice where this can be provided around the clock.
- 3** Our current number of clients, services and programs has outgrown our existing facility. We know that new services and programs will benefit our clients and are being offered in other hospices, but we cannot provide them at our current location due to insufficient space.
- 4** Community care is less expensive than care in a hospital. Hospital Palliative Care Ontario states that the cost of care in a hospital palliative care bed is \$850 a day, (\$768 a day at Peterborough Regional Health Centre) while it is \$439 a day in a hospice care centre. Our 10 hospice beds will contribute to more efficient and cost-effective health care delivery in Peterborough.

---

***"This campaign is not about bricks and mortar; it's about creating a welcoming, safe, peaceful place where it is safe to die and safe to grieve."***

David Kennedy, Hospice Peterborough Bereavement Coordinator

---

# Hospice Peterborough Care Centre Features

The construction plans for the new Hospice Peterborough Care Centre are now complete. These revised plans reflect our response to feedback we received from health professionals and our community during the concept phase.

A more efficient footprint for the building overall:

- Improved accessibility to the building for those with mobility issues
- Better overall access between the new and existing building
- Greater access for all throughout the building
- Elevator extended to third floor, to accommodate more programming

More family-centered spaces for visitors to our resident care wing:

- More community spaces, including three areas where families can gather

Increased use of green space on the property:

- All 10 bedroom suites now overlook green space
- Five separate green spaces include: serenity garden, private garden, sun deck, Victorian Garden and Walking Garden

## Building Highlights

**Total square footage: 17,812 sq. ft.**

### NEW CONSTRUCTION

**10,187 sq. ft.**

Ground Floor - 7,087 sq.ft.

Basement - 2,118 sq.ft.

Bridge area - 750 sq.ft.

### RENOVATIONS TO EXISTING BUILDING

**7,625 sq. ft.**

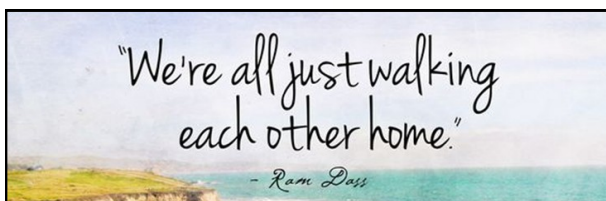
Ground Floor - 2,440 sq.ft.

2<sup>nd</sup> Floor - 2,415 sq.ft.

3<sup>rd</sup> floor - 1,374 sq. ft.

## Main Entrance

Everyone will enter Hospice Peterborough through a welcoming and easily accessible main entrance located next to a lay-by on London Street. The Oasis Room will be a quiet space where individuals and families can meet with staff and volunteers on their first visit or just sit and reflect. A family washroom with a shower will give visiting family members a private place to freshen up.



Close-up of main entrance



*Main entrance and donor wall*

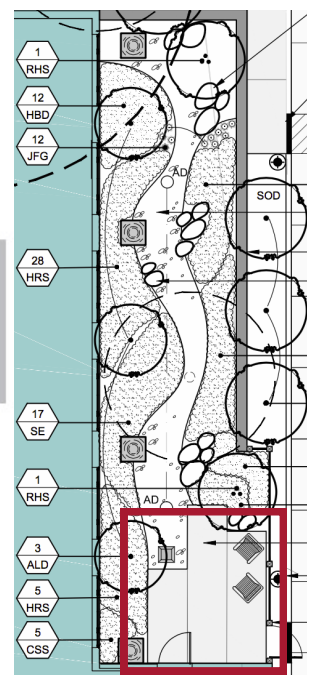
The main corridor will lead everyone to the main elevators and stairs connecting to the Community area and the Resident care area. It will also display our Donor Recognition wall and inform visitors about what is happening at Hospice through our interactive screen. The Community Hospice Foyer and 2<sup>nd</sup> and 3<sup>rd</sup> floor bridges will connect all visitors to the renovated community programming spaces.

## The Hospice Care Beds

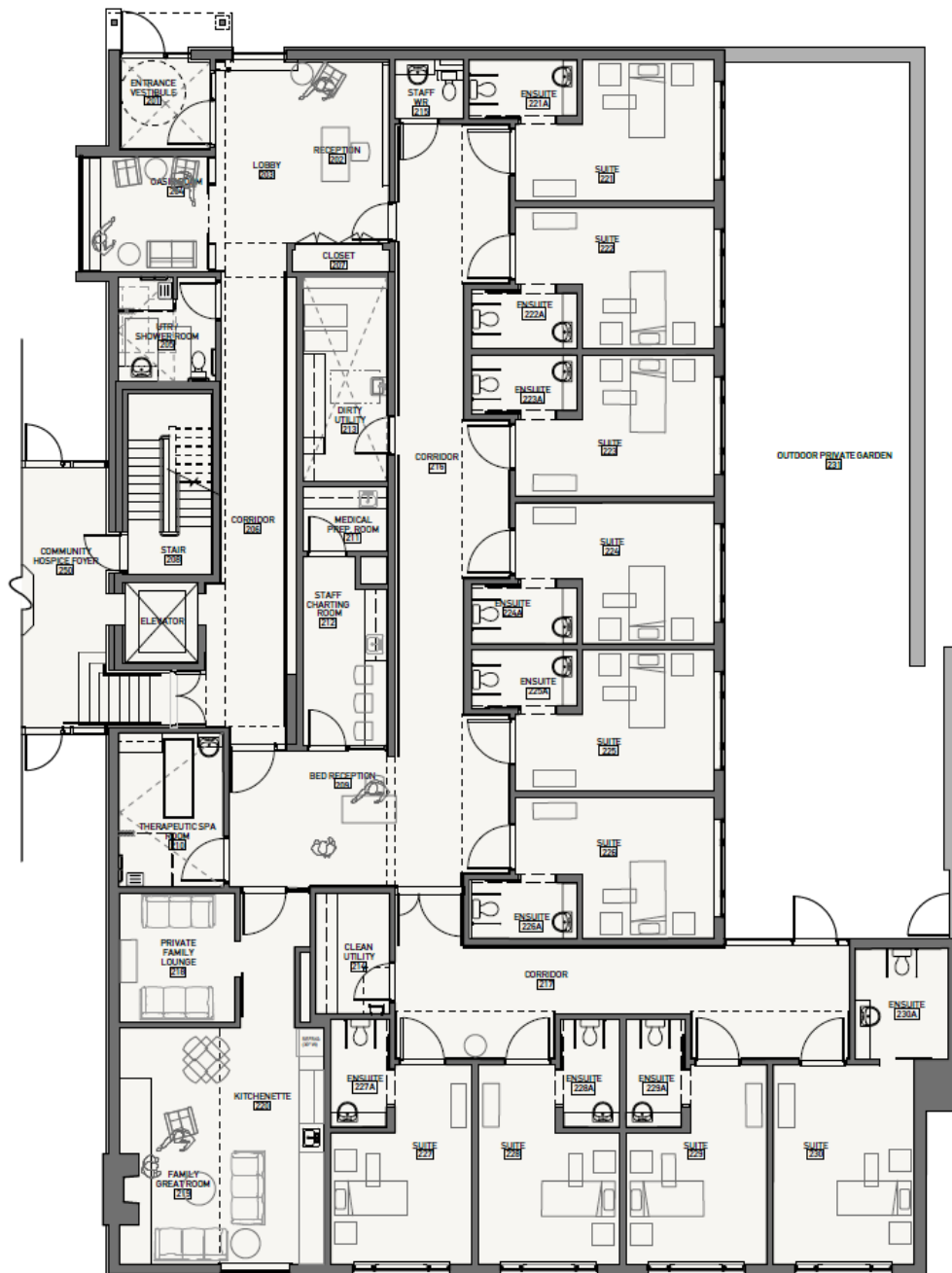


The 10 bedroom hospice will provide around the clock professional care, in a tranquil environment for residents at end of life. It will be a place where the focus is on compassionate care not cure.

The east view of the new facility (shown above) features a peaceful, private garden with water features and an accessible outdoor patio with a door wide enough for a bed to fit through (highlighted at right).



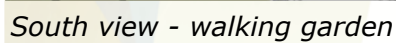
# MAIN FLOOR



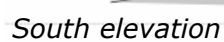
## The Resident Care area will include:

- 10 private bedrooms overlooking green space and gardens; one large enough to accommodate pediatric palliative care
- A Family Lounge for private visits with family and friends
- A Family Great Room with light filled space and a welcoming fireplace
- An adjacent family kitchenette and eating area
- A peaceful, private garden with water features and an accessible outdoor patio
- A therapeutic spa room for residents' use
- A nursing station and medical services areas
- A reception area that welcomes all clients and their families
- Space that is bright, accessible, innovative, calm, safe and welcoming





## This is a detailed architectural section drawing of a building. The drawing shows a cross-section through a modern structure on the right, which has a sloped roof and a large, open interior space. To the left, a traditional building with a gabled roof and a small arched window is visible. The drawing includes structural elements like walls, floors, and stairs, with some areas highlighted in blue. The drawing is a technical representation of a building's internal structure and spatial organization.

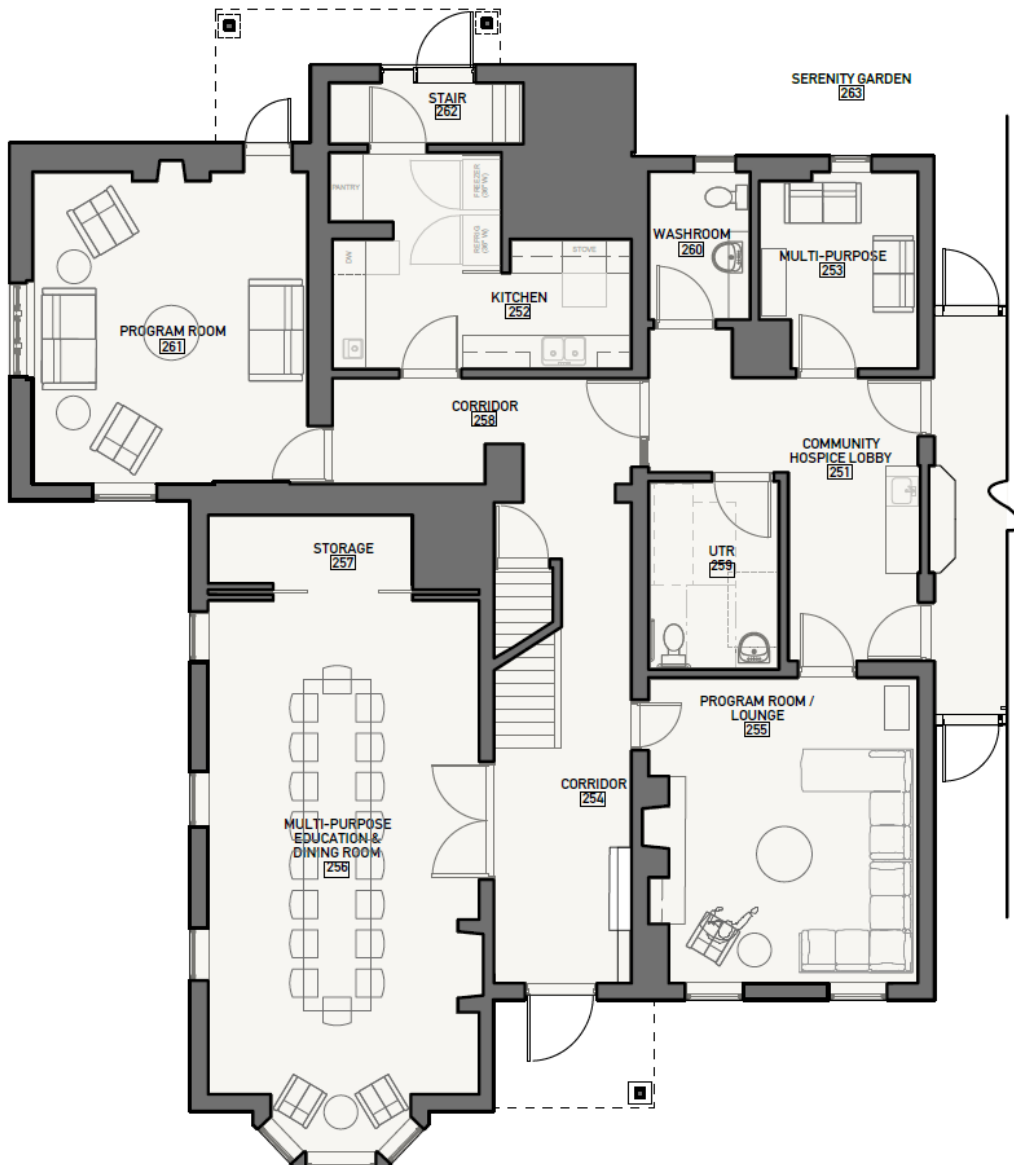


# Community Program Space

We love the feel of our current building ... safe, comfortable, peaceful, homelike. We will recreate that same feeling as we restore the Victorian home on our new site. In addition, it will provide us with double the space (7,625 square feet) in which our programs and services can continue to grow. This area will include:

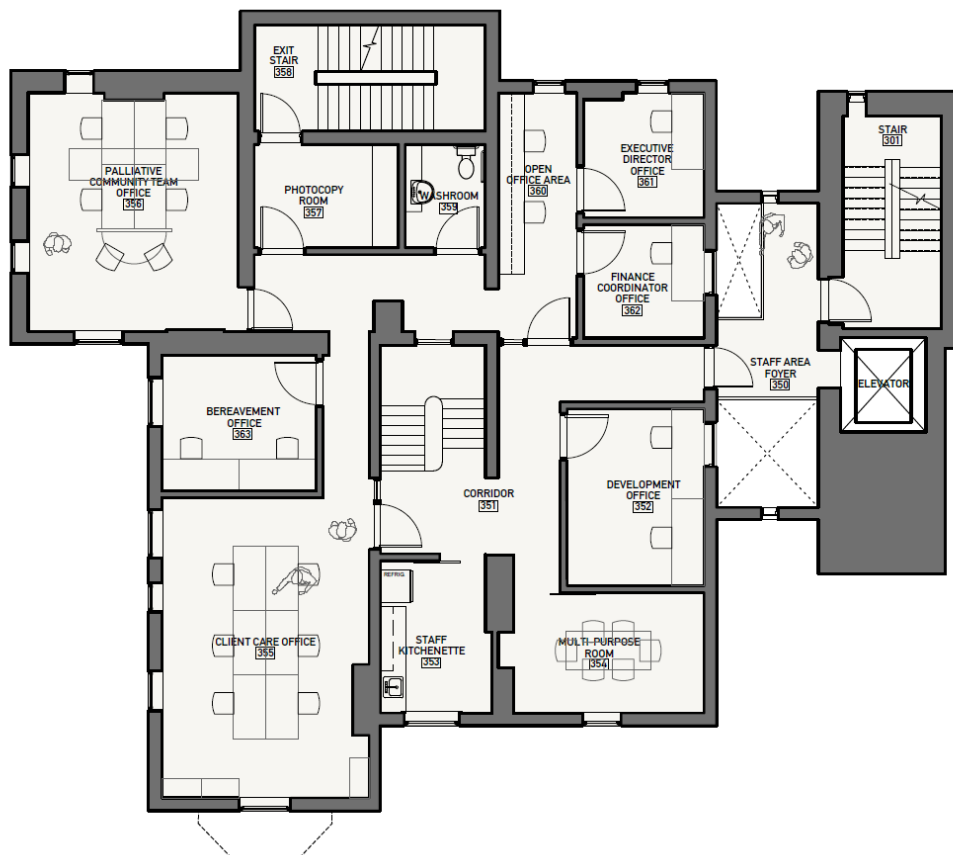
## Main Floor

- Welcoming foyer
- 2 multi function program spaces
- A large education and dining room
- A multi purpose counselling space
- Coffee Bar/Kitchenette
- A resource library
- Large Kitchen providing space for food prep for the whole facility
- 2 accessible washrooms
- 4 gardens offering space for programming and reflection



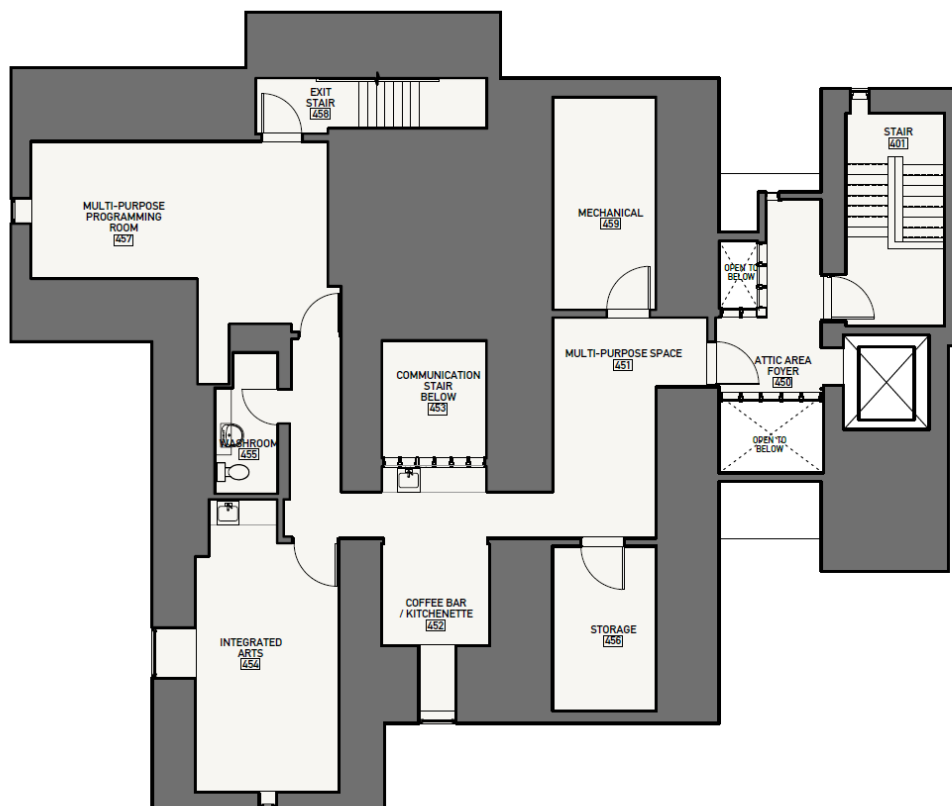
## Second Floor

- Client care office hub
- A bereavement and spiritual care office
- Palliative pain and symptom management and community team office
- Fund development office
- Administrative offices
- Multi-purpose room
- Staff kitchenette
- Accessible washroom



## Third Floor

- Multi-purpose programming space
- Interactive arts space
- Coffee bar/kitchenette
- Accessible washroom



# We still need YOUR support!

## From Betty Morris, Capital Campaign Chair

Two years ago we launched the Every Moment Matters campaign and I am pleased to report that we are now in the **Bring It Home** public phase of the campaign. The progress we've made so far and the milestones we've achieved have been possible because of the strength and commitment of a wonderful network of volunteers and a community that clearly believes in the special nature of hospice care.

**Thank-you to our superb Campaign Cabinet and the over 70 volunteers supporting this initiative.**

One of the reasons to move quickly on building the Hospice Peterborough Care Centre is due to significant increases in our referrals and client interactions over the past five years. This level of support is stretching the capacity of our building, staff and volunteers and we anticipate these numbers will continue to grow. We

are applying for additional operating funding to support our current programs and we know that our Central East LHIN funding will increase by \$1.05 million annually once the 10 hospice care beds are operational.

Once the Hospice Peterborough Care Centre is completed we will need to hire additional health care professionals to provide care at the bedside. We anticipate needing RN's, RPN's and PSW's, a total of 16 front line staff plus two additional support staff to assist with administration and operations.



*Every Moment Matters Campaign Cabinet*

## Bring It Home

As of January 18th, 2017 we have raised \$7,892,800, 93% of our \$8.5M goal!

Now we are in the **Bring It Home** phase of our campaign and are reaching out to our community to help raise the remaining \$607,000.

**At some point in our lives, we will all be touched by life-threatening illness, death or bereavement. The new Hospice Care Centre will be there for you, your family or friends through those difficult times.**

Please consider making your gift today.



*Hospice Care Centre, 325 London Street*

With your help, Hospice Peterborough can begin a new chapter, relocate, grow, and open our community's first hospice care beds.

## Every Moment Matters and Every Donation Counts

**To help *Bring It Home*, please make your donation today and support the Hospice Peterborough Care Centre**

Hospice Peterborough 439 Rubidge Street, Peterborough, ON K9H 4E4 705.742.4042

[www.hospicepeterborough.org](http://www.hospicepeterborough.org)

[www.hospicepeterboroughcampaign.ca](http://www.hospicepeterboroughcampaign.ca)